



KEY-LINK™
FENCING & RAILING

WOOD/COMPOSITE LINE POST CHANNEL

RECOMMENDED TOOLS

- Safety Glasses
- Tape Measure & Pencil
- Power Drill / ($\frac{3}{8}$ " bit)
- Rubber Mallet

Scan for more
information



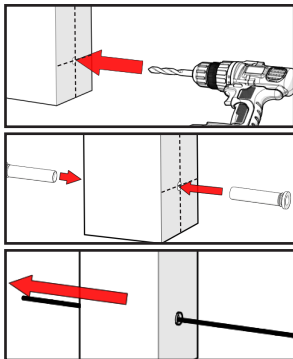
WARNING: This product can expose you to chemicals including Quartz (crystalline silica), which is known to the State of California to cause cancer, and Hexavalent Chromium, which is known to the State of California to cause birth defects or other reproductive harm. For more information go to www.P65Warnings.ca.gov.

INSTALL CABLE CHANNEL

For Posts where Cable Through Hardware is used. Mark both connecting faces of each Post. Drill a hole (using a $\frac{3}{8}$ " Drill bit) to the center of the Post from each side, meeting in the middle.

Use a Rubber Mallet to tap Wood Cable Through Sleeves into place on either side of the Post.

Insert Cable through Sleeves.



- These directions are only a guide and may not address every situation.
- Always wear proper safety equipment while assembling and installing.
- The installer should obtain all required building permits and follow all installation procedures in accordance with applicable building code requirements. For full, code-compliant railing sections or alternative railing options, visit KeyLinkOnline.com to find a dealer.
- Key-Link Fencing and Railing Inc. shall not be held liable for improper or unsafe installations.