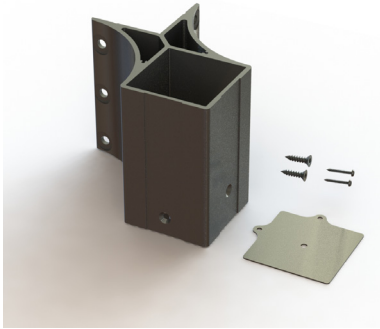




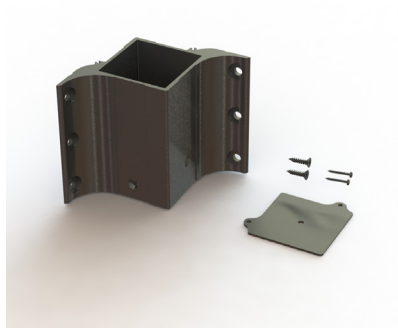
**KEY-LINK™**  
FENCING & RAILING

# Fascia Mount Bracket

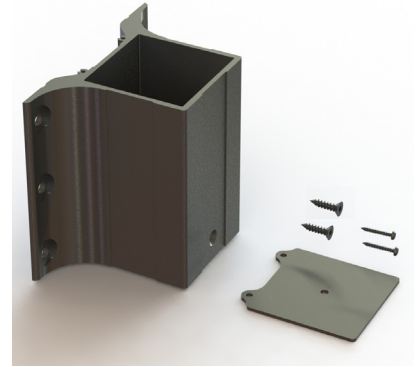
Outside Corner Post Mount Bracket



Inside Corner Post Mount Bracket



Line Post Mount



## Recommended Tools

- Safety Glasses
- Level
- Tape Measure & Pencil
- Power Drill

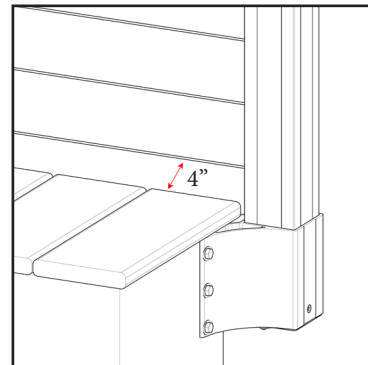
## What's Included

- (1) Mounting Bracket (Corner, Line, Inside Corner)
- (1) Cap Plate
- (2) #10 x 1" Flat Head Screw
- (2) #8 x 1" Pan Head Screws

## Sold Separately

- Fascia Mount Section Support Bracket Kit (needed for all railing sections over 6')
- Under Deck Bracket Only (for use in line bracket scenario)

**Note:** Maximum straight line distance from top deck surface edge to the bottom of rail or cable should never exceed 4 inches



- These directions are only a guide and may not address every situation.
- Always wear proper safety equipment while assembling and installing.
- The installer should obtain all required building permits and follow all installation procedures in accordance with applicable building code requirements.
- Key-Link Fencing and Railing Inc. shall not be held liable for improper or unsafe installations.
- Applying paint, other than Key-Link's touch up paint, will void your warranty.
- To ensure proper coverage by our warranty please visit our website and complete the warranty form and mail to: Key-Link Fencing & Railing, Inc., 260 Jalyln Dr., New Holland, PA 17557



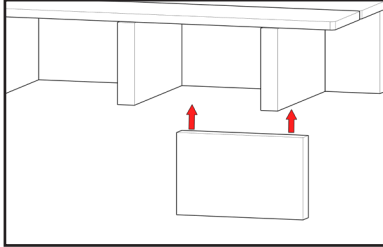
"WARNING: This product can expose you to chemicals including Quartz (crystalline silica), which is known to the State of California to cause cancer, and Hexavalent Chromium, which is known to the State of California to cause birth defects or other reproductive harm. For more information go to [P65Warnings.ca.gov](http://P65Warnings.ca.gov)."

## Code Approved Fastening Method For Wood

### Step 1:

(for line and inside corner only. Outside corner bracket installed without additional cutting)

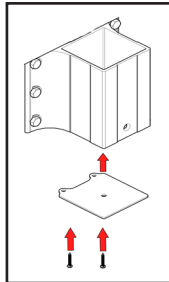
Using #9 x 3" wood screws, secure an additional wood board, behind outer joist where bracket will be mounted, to the inside joists



### Step 2:

Fasten the bottom cap plate to bottom of Keylink Fascia Mount bracket with provided #8 x 1" pan head screws

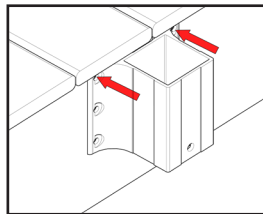
Do Not use impact or hammer drill to tighten



### Step 3:

1" below deck's surface, mark and drill 3/8" holes for each bolt location on mounting surface

Note: bracket is designed for 3/4" deck overhang

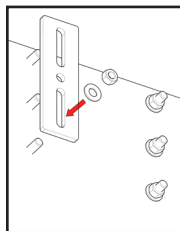


### Step 4:

Insert 3/8" bolts with SAE flat washers & hex nut

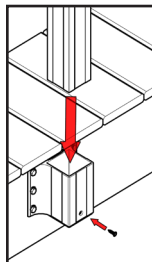
**Line Mount:** Requires 1 under deck bracket  
**Outside and Inside Corner Mount:** does not require under deck bracket

Do Not tighten fully until post is inserted



### Step 5:

Insert post into Keylink Fascia Mount Bracket and using provided #10 x 1" flat head self drilling screws, secure post to bracket



### Step 6:

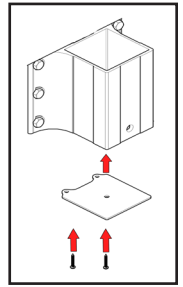
fully tighten 3/8" bolts to mounting surface

## Code Approved Fastening Method For Concrete

### Step 1:

Fasten the bottom cap plate to bottom of Keylink Fascia Mount bracket with provided #8 x 1" pan head screws

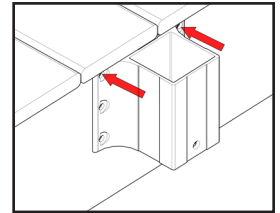
Do Not use impact or hammer drill to tighten



### Step 2:

1" below deck's surface, mark and drill 15/64" holes for each bolt location on mounting surface

Note: bracket is designed for 3/4" deck overhang

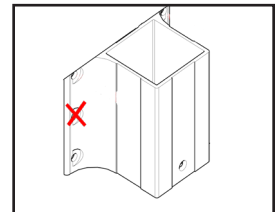


### Step 3:

Fasten bracket to mounting surface with 3/8" x 2" lag bolt

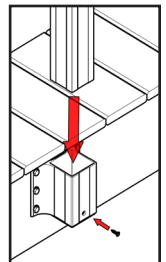
Do Not tighten fully until post is inserted

Do Not secure bracket using center mounting hole for line bracket and inside corner bracket



### Step 4:

Insert post into Keylink Fascia Mount Bracket and using provided #10 x 1" flat head self drilling screws, secure post to bracket



### Step 5:

fully tighten 3/8" lags to mounting surface