



KEY-LINK™
FENCING & RAILING

CABLE RAILING STAIR FITTINGS

RECOMMENDED TOOLS

- Safety Glasses
- Tape Measure & Pencil
- Power Drill / ($\frac{1}{8}$ ", $\frac{3}{16}$ " bits)
- $\frac{7}{16}$ " & $\frac{13}{16}$ " Wrench

- Threading Needle
- Tension Gauge
- Cable Grip Adapters
- Cable Cutter
- Cable Release Tool

Available from Key-Link

Scan for more
information



WHAT'S INCLUDED



Cable Receiver



Threaded Nut



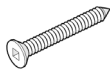
Lock Jaw Housing



Threaded Base



Threaded Receiver Cap



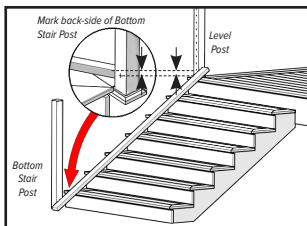
Blue TapCon Screw

- These directions are only a guide and may not address every situation.
- Always wear proper safety equipment while assembling and installing.
- The installer should obtain all required building permits and follow all installation procedures in accordance with applicable building code requirements. For full, code-compliant railing sections or alternative railing options, visit KeyLinkOnline.com to find a dealer.
- Key-Link Fencing and Railing Inc. shall not be held liable for improper or unsafe installations.

⚠ WARNING: This product can expose you to chemicals including Quartz (crystalline silica), which is known to the State of California to cause cancer, and Hexavalent Chromium, which is known to the State of California to cause birth defects or other reproductive harm. For more information go to www.P65Warnings.ca.gov.

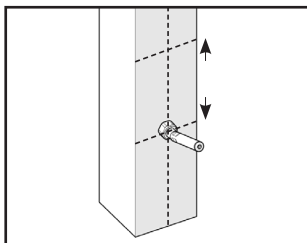
INSTALL STAIR FITTING

To determine placement of the first Receiver; use a straight edge laid flat on the nose of the stairs, and measure off the surface to the first mark on the Level Post, and translate that measurement to each post.



Mark each additional hole at no more than 3" (If following IRC code) on the back-side of the Bottom Stair Post, and drill a 1/8" pilot hole at each mark.

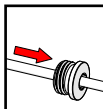
Note: On a Line Post; 3/16" holes should be drilled at the appropriate stair angle.



INSTALL CABLE

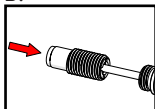
A.) Starting at one end, slide a receiver end cap on to the end of the cable.

A.



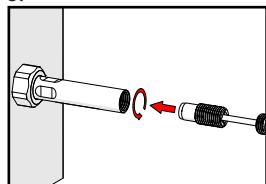
B.) Secure a lock jaw housing component to the end of the cable ensuring the cable is fully engaged with the internal locking jaws (cable should insert approx 3/4").

B.



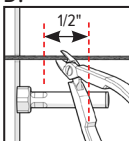
C.) Thread this end of the cable into the receiver just enough so end cap can be fully threaded on.

C.



D.) Route your cable to the opposite end. Pull the cable taught, at 1/2" past the cable receiver end, mark and cut your cable.

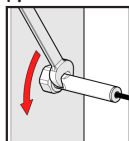
D.



E.) Repeat steps A-D for each cable strand.

F.) Using a 7/16" wrench; hold the cable with vice grips fitted with Key-Link's cable grip adapters and rotate fitting counter-clockwise to increase cable tension to your local building code specification.

F.



Do Not Exceed 200lbs of cable tension.

**Consult your local building code official for additional cable tensioning requirements*